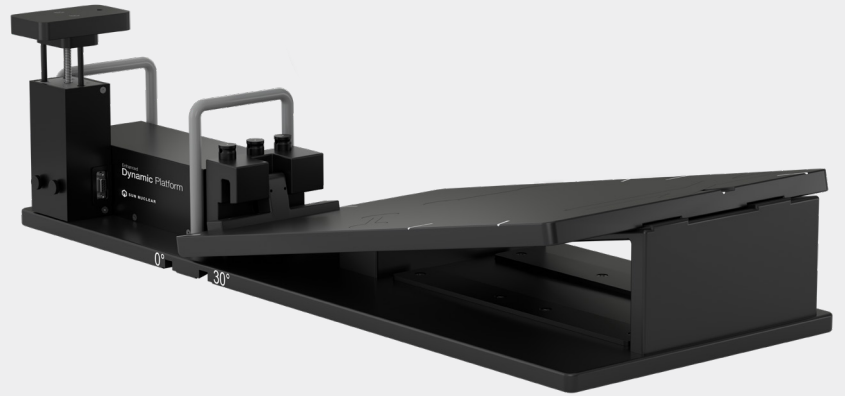


Enhanced Dynamic Platform

Programmable Motion for Tracking & Positioning

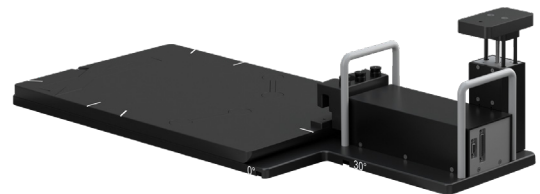
The Enhanced Dynamic Platform provides a simple to setup 1D, 2D or 3D motion platform for quality assurance of tumor tracking and gating systems.



Features and Benefits

Enhanced Dynamic Platform, designed by CIRS, now part of Sun Nuclear:

- Use any phantom up to 70 lbs (50 lbs when ramp is inclined)
- Easily set up for 1D, 2D or 3D motion QA
- Proven motion platform design and technology for sub-millimeter accuracy
- Lock-bar locations for 0- and 30-degree rotation setups
- 11.3° inclined plane provides +/- 5.0 mm (10 mm total) of motion in posterior-anterior direction
- 30° rotation provides +/- 12.5 mm (25 mm total) of lateral motion
- Surrogate platform simulates posterior-anterior chest wall motion
- Surrogate and phantom motion are independently programmable
- Motion software enables breathing waveforms with different cycles, amplitudes, start positions and phase shifts

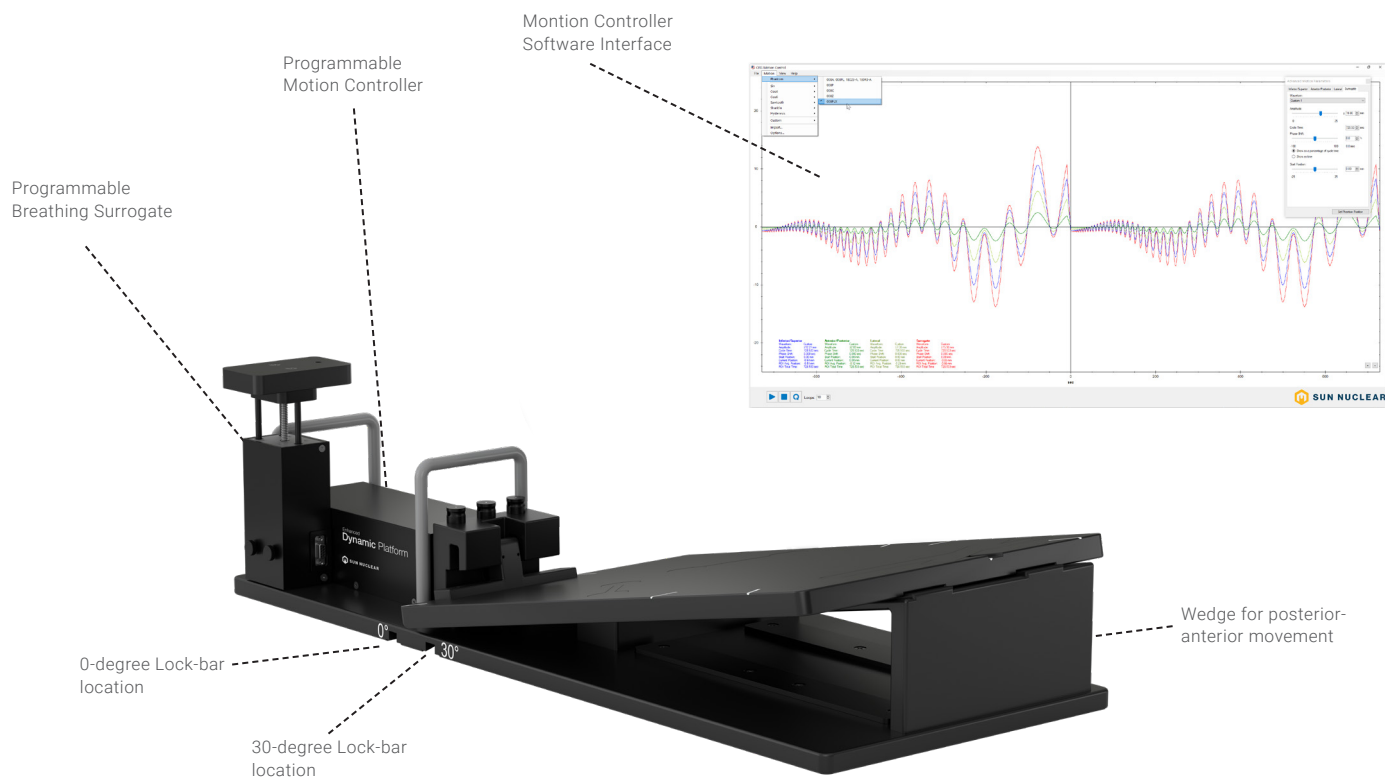


1D Motion Setup



3D Motion Setup

Features



Specifications

Dimensions (cm)	92.3(L) x 37.5(W) x 24.8(H)
Weight (kg)	18.4
Position Accuracy (mm)	+/- 0.25
Maximum Amplitude Inf/Sup (mm)	+/- 25.0 (50 total)
Maximum Amplitude Lateral (mm)	+/- 12.5 (25 total)
Maximum Amplitude Pos/Ant (mm)	+/- 5.0 (10 total)
Maximum Amplitude Surrogate (mm)	+/- 25.0 (50 total)
Editable Built-In Waveforms	sin(t), 1-2cos4(t), 1-2cos6(t), sawtooth, sharkfin
Power	110-250 VAC, 50/60 Hz