

SonoTE™ Phantom

Transducer Evaluation

- A low cost, high value resource for sonographers
- Provides affordable uniformity tests for linear, convex and intercavity transducers



The Sono TE Phantom is small and durable; designed to be kept with every ultrasound system. Shadows or artifacts in the image indicate a problem with one or more transducer elements, while the following image characteristics indicate the transducer is functioning properly:

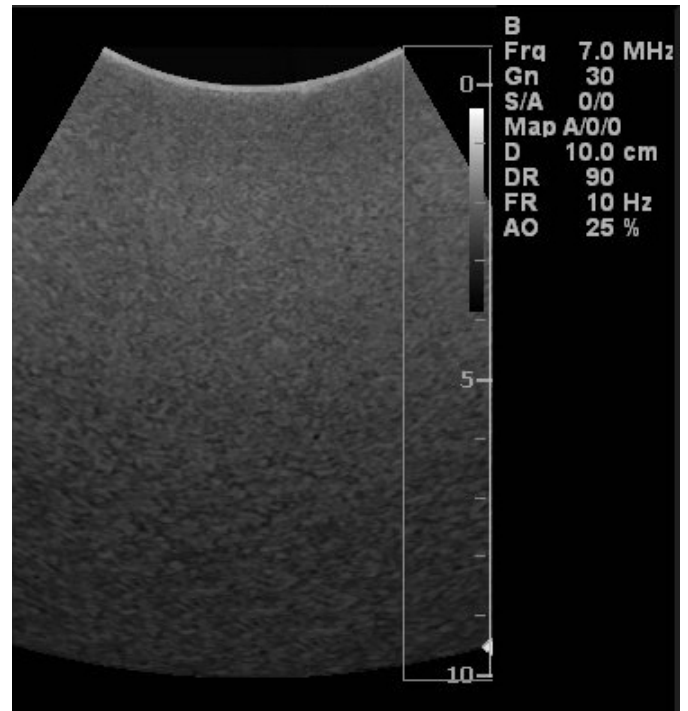
- Smooth, homogenous surface
- Uniform grey scale
- No targets are visible

Personalize the Sono TE Phantom with your brand. You may select from a range of colors and add your logo¹.

Specifications

Material:	Silicone base
Dimensions (L/W/H):	11.5 x 5.7 x 7.5 cm (4.63 x 2.25 x 3 in)
Weight:	580 +/- 5 g (1 lb. 4 oz.)

Designed for use with linear, convex and inter-cavity transducers. Not for use with phased array sector scan transducers.



The Sono TE Phantom smooth, homogenous surface indicates a transducer is not defective.

¹Personalized for large orders.