

Lumbar Training Phantom

Model 034



FOR INTERVENTIONAL PAIN MANAGEMENT

The CIRS Model 034 Lumbar Training Phantom provides a realistic puncture practice phantom for use with fluoroscopic image guidance.

The realistic anatomy of the The Lumbar Training Phantom facilitates hand-eye coordination and can be used to train many spinal procedures including sacroiliac joint injection, lumbar and caudal epidurals, diskography, block nerves, and facet blocks.

Ligaments, spinal cord, discs, skin and the simulated soft tissue have differing softness to allow trainees to "feel" their way through to the injection or target site.

In addition to fluoroscopy, the phantom can be imaged under CT, MR, and ultrasound. The Model 034 comes with a User Guide and 12-month warranty.

Features

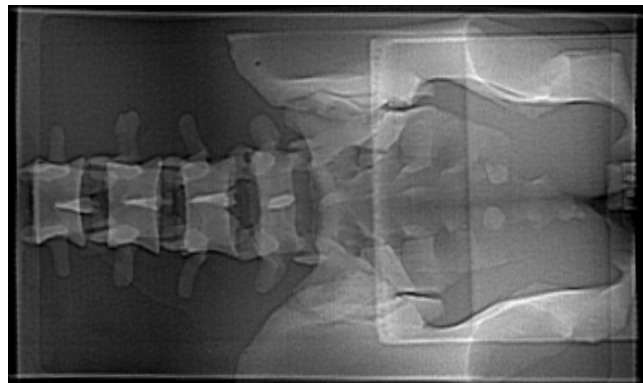
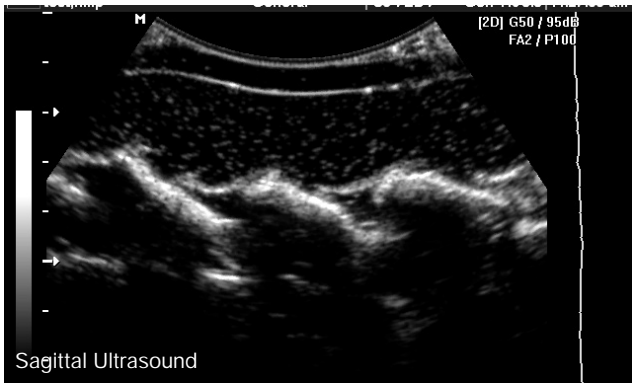
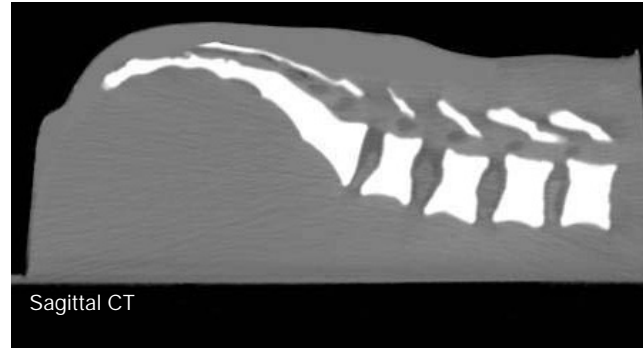
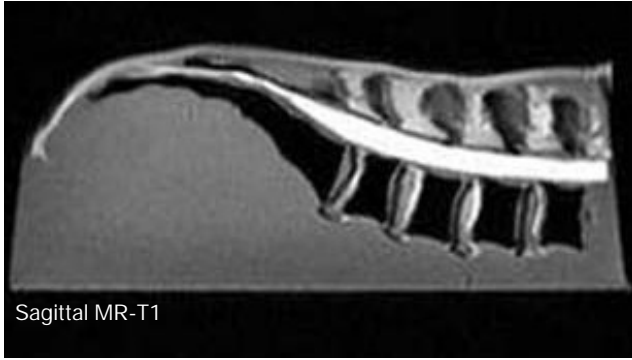
- Realistic needle resistance of each tissue to allow trainee to "feel" the injection site
- Allows for multiple biopsies per injection site
- Contains anthropomorphic ilium, sacroiliac joint, sacrum plus L2- L5, superspinous ligament, interspinous ligament, ligament flavum, discs (anulus fibrosis and nucleus pulposis)
- Allows training for six different spinal procedures

900 Asbury Ave • Norfolk, Virginia 23513 • USA
Tel: 800.617.1177 • 757.855.2765 • Fax: 757.857.0523

WWW.CIRSINC.COM

CIRS

Tissue Simulation & Phantom Technology



SPECIFICATIONS

DIMENSIONS:	38 cm x 25 cm x 18 cm (15" x 10" x 7")
PHANTOM WEIGHT:	19 lbs. (7.1 kg)
MATERIALS:	Epoxy Resin (bony spinal structures) Urethane (soft spinal structures) Zerdine® (soft tissue) Z-Skin™ (surface material)

MODEL 034 INCLUDES

QTY	COMPONENT DESCRIPTION
1	Lumbar Training Phantom
1	User Guide
-	12-Month Warranty

*Please note: once any device has been inserted into the phantom (such as biopsy needles, localization wires, etc.) the 12 month warranty will not cover claims related to material desiccation or needle tracking.

